

CERTIFICATE OF LOCATION OF GOVERNMENT CORNER

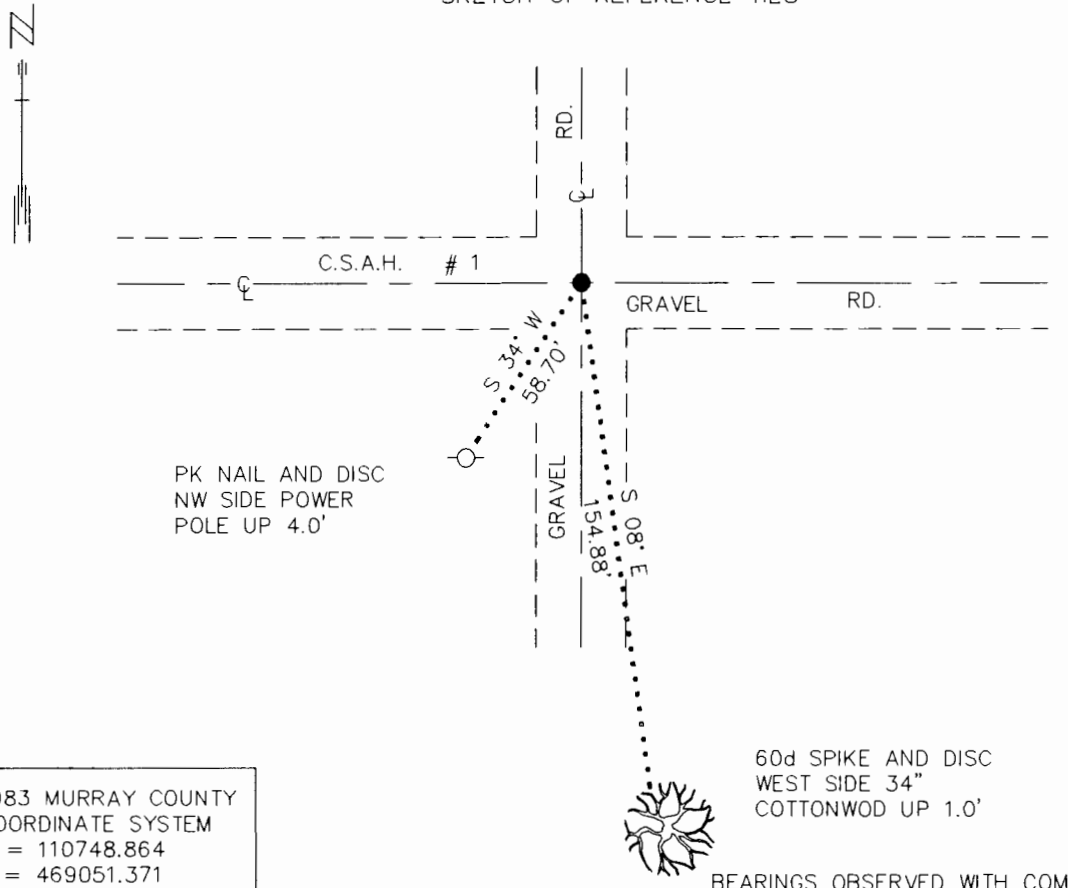
NORTHEAST Corner of Section 28, Township 105 N., Range 42 W., 5 th P.M.

STATE OF MINNESOTA, County of MURRAY

At the corner location shown on the sketch:

- On 8/18/92 found a 2 1/2" I.D. WAGON SPINDLE, DOWN 2.0' WITH FIELD STONE
DATE ON SOUTH SIDE.
- left monument as found, lowered monument, removed monument (explain)
- On 8/18/92 Placed a 3/4" X 24" IRON ROD WITH ALUMINUM CAP STAMPED
DATE "MN DNR SURVEY MARKER", INSIDE WAGON SPINDLE, DOWN 0.5'

SKETCH OF REFERENCE TIES



1983 MURRAY COUNTY
COORDINATE SYSTEM
N = 110748.864
E = 469051.371

BEARINGS OBSERVED WITH COMPASS

Statement of evidence relative to this corner location is on back of page. 10/7/92 WMA01187.00.00.01

I hereby certify that this document and the data contained herein was prepared by me or under my direct supervision.

Lowell R. Pomeroy SIGNATURE DATE 10-26-92
Registration No. 17005

- Land Surveyor, Professional Engineer
- County Surveyor, County Engineer

OFFICE OF THE COUNTY RECORDER
County of MURRAY

I hereby certify that this document was filed in the Co. recorders office at _____ M. on the _____ day of OCT 27 1992 A.D., 19____

County Recorder James V. Johnson
By _____, Deputy
DOCUMENT NO. _____

Northeast Corner Section 28, Township 105 North, Range 42 West

The DNR Bureau of Engineering contacted the following offices for information on this corner:

MN Secretary of State
Murray County Recorder and Highway Engineer
Moseng Land Surveying at Marshall
Madsen Land Surveying at Fairmont

- 1861 The U.S. General Land Office notes, on file in the Secretary of State's Office, show the corner marked with a post, made mound with trench and pits as per instructions.
- 1902 An old record book, on file in the County Highway Engineer's Office, contains a survey that states a Wagon stub and spindle are at the corner.
- 1930 Surveyor's Record Book A, on file in the County Recorder's Office, on page 358, contains a survey that states; "found old corner wagon hub placed stone on south side of hub". Four reference ties are shown to the corner. The corner is shown to measure 2637.9 ft. from the east quarter corner Section 21.
This information is also contained in the County Highway Engineer's Office.
- 1931 Surveyor's Record Book A, on file in the County Recorder's Office, on page 372, contains a survey that states; "See Sec 21".
This information is also contained in the County Highway Engineer's Office.
- 1967 An old record book, on file in the County Highway Engineer's Office, contains a survey that states; located steel wheel hub North side of field stone marker. Placed two 3/4" steel rods above stone. Three reference ties are shown.
This information is also contained in an office copy of government corner tie book on file in the County Highway Engineer's Office.
- 1969 On three separate pages of the record book containing the 1967 information, this corner is described as a iron rod with two reference ties.
- 1992 August 18, the DNR Bureau of Engineering conducted a search for this corner and found a 3/4" x 12" rebar, down 0.1 ft. A 3/4" rebar, down 1.2 ft. A 2 1/2" inside diameter wagon spindle down 2.0 ft with a field stone on its south side. Wagon spindle was found to measure:
2647.61 ft. from the north quarter corner Section 27
2637.14 ft. from the east quarter corner Section 21
Discarded the two rebars, and drove a DNR Survey Marker in the center of the wagon spindle.

Analysis of the available information led the DNR Bureau of Engineering to conclude that the found Wagon Spindle marks the location of the corner.